



## MP to have



# SES

STATE EMERGENCY SERVICE

Earlier this month representatives from The Barossa Council, MP Inc, SES and State Government met to discuss the possibility of an SES presence in our town. Several sites within the township are being considered.

The South Australian State Emergency Service (SES) is a volunteer-based organisation that responds to a wide range of emergencies and rescues across the state 24-hours a day, seven days a week, 365-days a year.

Primarily responsible for responding to extreme weather (including storms and extreme heat) and flooding events, the SES also responds to road crash, marine, swiftwater, vertical and confined space rescues.

The SES assists the South Australia Police (SAPOL) in land search operations and traffic management and plays an important support role to the Country Fire Service (CFS) during major bushfires.

SES members - which currently number around 1700 - also devote considerable time helping raise the community's awareness of a range of natural hazards.

In a typical year, SES volunteers respond to around 10,000 calls for assistance from the South Australian community. Some of the busier Adelaide metropolitan units respond to hundreds of callouts each year.

SES volunteers have saved the lives and property of countless South Australians since the early 1960s when it was known as the Civil Defence.

Over the past 50 years the SES has morphed into a highly trained, responsive and effective emergency service agency with a key role in ensuring the safety of all South Australians.

To become a volunteer with the SES, phone 1300 364 587 or visit the [Join the SES](http://www.ses.sa.gov.au/site/home.jsp) page: <http://www.ses.sa.gov.au/site/home.jsp>

- P 1** SES in Mt P?
- P 2** Council Wards or not?  
Electoral Boundaries – proposed changes
- P 3** Our hospital in good hands
- P 4** Uncovering our Past: Our 'comfortable', country hospital
- P 5** Market-ing & Shed-ding
- P 6** Mt Pleasant Gem: Syd Starick
- P 7** Violet Day
- P 8** SALA in the Atrium!
- P 9** Bits & bobs
- P 10** Out & about: Springton & Sanderston Trail
- P 11** September Calendar



Member for Schubert Stephan Knoll MP with Wendy Harvey EO, DoN Mount Pleasant & Gumeracha Hospitals, pictured at the MP Community Dinner on 28<sup>th</sup> August. See page 2 for information about the proposed change to our Electoral Boundary, placing us in Morialta. Wendy's article on page 3.



YOU'VE GOT IT IN YOU  
TO BE REMARKABLE

VOLUNTEER NOW  
1300 364 587



## To Wards, or not?

The Local Government Act requires Council to undertake a review of all aspects of its composition and the division (or potential division) of the Council area into wards. The Barossa Council last completed this Elector Representation Review in 2009 and is now required to undertake and complete another review by April 2017 to ensure fair and equitable representation of all electors prior to the 2018 Local Government elections.

The key issues that need to be addressed during the review include:

- The principal member of Council more specifically whether it should be a mayor elected by the community or a chairperson selected by (and from among) the elected members
- The composition of Council, including the number of elected members required to provide fair and adequate representation to the community and the need for area councillors in addition to ward councillors
- The division of the Council area into wards or the retention of the existing “no wards” structure and
- If wards are to be introduced, the level of ward representation within, and the names of, any proposed future proposed wards.

A first round of public consultation was undertaken in May 2016 and helped shape Council's in principle decisions made at its August meeting. These in principle decisions are outlined in the *attached* report and Council will be grateful for any feedback your committee members might provide on them.

The report:

- provides information on the initial public consultation undertaken by Council and Council's response to the issues raised within the submissions received and
- sets out the proposal that Council considers should be carried into effect and
- presents an analysis of how Council's proposal relates to the relevant provisions and principles of the Act.

Please submit your feedback, using the *attached* public submission form if you prefer, by close of business **Friday 23 September 2016** and direct it to the Chief Executive Officer, PO Box 867, Nuriootpa 5355, or email to [barossa@barossa.sa.gov.au](mailto:barossa@barossa.sa.gov.au).

Information regarding the representation review can be obtained by contacting Joanne Thomas, Director Corporate and Community Services on telephone 8563 8444.

**+** Information about the wards available on the website:  
[mountpleasant.sa.au](http://mountpleasant.sa.au)



## Change of Electoral Boundary affects Mount Pleasant

Member for Schubert Stephan Knoll attended our Community Dinner on Sunday night and highlighted the proposed changes to the electoral boundaries, which will mean that we will no longer be in Schubert (aligned with our position as part of The Barossa Council) but will become part of Morialta, which takes in Athelstone, Montacute, Cudlee Creek, etc. He explained that the Commission tries to even out the numbers so that each elected member would represent approximately 25,000 constituents.

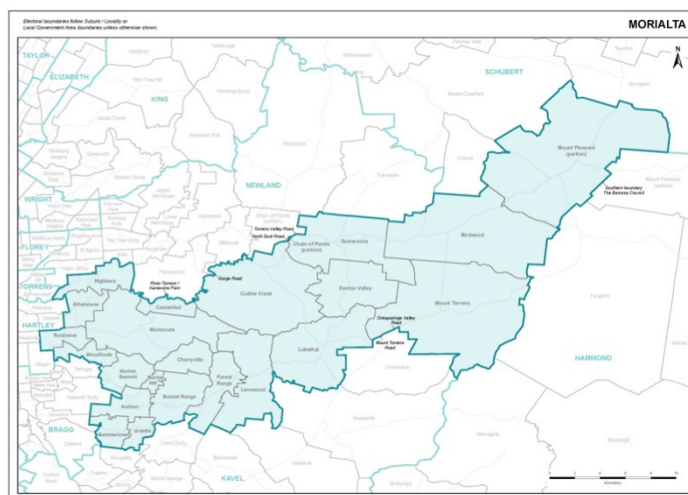
If people are not happy with this arrangement, they may object on the grounds of 'Like interest' – in that perhaps the proposed changes would align our area with towns that have nothing in common with our town, unlike the current situation.

From the Electoral Districts Boundary Commission's website (<http://edbc.sa.gov.au>):

In accordance with section 85(6) of the Constitution Act, the Commission invites any person who has already made a representation to the Commission in relation to this redistribution, or any interested member of the public, to make any final submission in writing that he or she thinks fit about the draft order (including the reasons that support it), within one month. The Commission will then consider all such submissions and it may, at its discretion, hear and consider any evidence or argument relating to any or all of those submissions.

Submissions must be lodged with the Secretary to the Commission, Mr John Aquilina, GPO Box 646, Adelaide SA, 5001 (telephone (08) 7424 7400; email [EDBC.secretary@sa.gov.au](mailto:EDBC.secretary@sa.gov.au)) no later than 5.00 pm on Friday, 16 September 2016.

The Commission will then proceed to finalise its order.





# Local health care in good hands

On Sunday the 28<sup>th</sup> we were lucky enough to have Wendy Harvey as our guest speaker at the Community Dinner. Wendy is the Executive Officer, Director of Nursing, at Mount Pleasant and Gumeracha Hospitals, and has been nursing for 40 years, including 25 years nursing with experience in country health, Midwifery & Disability. She is very happy with the level of care offered at both hospitals, and is fiercely proud of the staff and their achievements.

Here is some of what she had to say:

When the State Government made changes in health delivery in 1995, Gumeracha and Woodside had the opportunity to relinquish their surgery suites. Gumeracha accepted and Woodside declined. Woodside was then defunded. Gumeracha still has an emergency department (as has Mount Pleasant). Because of the advances in medical technology and care delivery now offered, small country hospitals don't need to be as big – both hospitals have a 34 bed capacity, which is adequate for their situations. Mount Pleasant stopped offering surgical procedures three years ago, as there were fewer than 100 cases per year, maintaining a surgical capacity wasn't sustainable. XRay services were also discontinued, as there were very good facilities in the Barossa, Gawler and Tea Tree Gully areas. Wendy says that no community of this size can afford to provide services 'just in case', but they can provide a system that is ready 'just in time'. Transforming Health is perhaps more about transforming buildings and structures, so that health services are delivered in a more appropriate and cost effective manner.

The Emergency Department processes about 600 cases per year, and those users are billed by medical staff, unlike our biggest public hospital, the R.A.H. which is able to provide doctors around the clock. In emergencies, cases are prioritized by triage as treat, transfer or stay. In case of a true emergency, if patients need to be transferred, the helicopter takes 17 minutes to fly from the oval to the R.A.H. There are also transitional care packages where people are looked after who are not quite ready to leave hospital. Newer doctors have a tendency to rely more on tests than doctors in the past, who relied more on their observations. In the case of a heart attack victim, blood tests can show in ten minutes whether there has been damage to the heart, and treatment can start immediately. Patients receive the same treatment they would receive if they were at the R.A.H. or Flinders Hospital.

A decade ago the Friends of the Mount Pleasant Hospital group was formed, and with their help and some very generous bequests, some \$160,000 has been raised.

Mount Pleasant Hospital provides an excellent service to the community, and is in a slightly better condition than Gumeracha, and Wendy is confident it will be around for a long time to come.



Wendy Harvey – Executive officer and Director of Nursing  
Mt Pleasant & Gumeracha Hospitals.

## Community dinner



The August Community Dinner was a little down in numbers – probably because there was so much else on,



but those who attended were treated to some fabulous Italian dishes – once again provided by the Ladies of the night CWA group, and Lucia Campaniello.

In the absence of Syd Starick (who was in Alice Springs getting some award – see page 6) John Bowd took over the spinning of the wheel for the raffle. Although not quite a vigorous as Syd, he still gave it a good push, and the pile of prizes was reduced quickly – with Chris Hebart taking home the meat tray.

## Uncovering Mt Pleasant's past: A Comfortable, Country Hospital

Just as we do today, so the Mount Pleasant community saw a need and acted in 1911... Doctor Proctor arrived in the area in 1906 and identified the need for better outcomes for accidents and emergencies with immediate attention only being possible with the appropriate facilities, and so a decision was made to establish a hospital...

An advertisement in the Mount Barker Courier in December 1911 announced that a hospital would be established at Mount Pleasant, with Miss Nugent as Matron and all care for patients would be carried out by qualified nurses. In November it was stated that *'...A suitable house of six rooms in the main street was secured and converted into a spotlessly clean and comfortable establishment where patients will receive the same care and scientific treatment that obtains in the city....'*

This was the first hospital in Mount Pleasant, and it was situated on the block of land where the Senior Citizens homes are, opposite the former Police Station. Dr Proctor was in attendance with Nurse Nugent in charge of the Hospital and staff, but by February 1916 the premises had become too small, and so a second hospital was established at Totness House, the house to the rear of the Soldiers Memorial Hall, which was owned by the Giles family. Two sisters, Fanny and Kate, had decided to move to a smaller house and this opened up the opportunity for the large house to become the new hospital. Situated away from the main thoroughfare, over the River Torrens, but nearby the doctor's residence, this situation proved to be ideal.

+ Back in the day, there was a **mortuary** at the Hospital, and things were a little more relaxed then. One night, a young **nurse** – who shall remain nameless – was sent to the mortuary on an errand. A **spooky** place at best, it was more so in the **dead of night** (pardon the pun), and our nurse was more than a little jittery. Just as she was about to leave, the **sheet** covering a **deceased** person suddenly started **moving**. Quick as a flash she was out of there, and it wasn't until later that she found out the resident **chooks** had the run of the place, and one of them had obviously decided the mortuary was a safe place to **ROOST** for the night!

### + Did you know?

A decade ago the Friends of the Mount Pleasant Hospital group was formed, and with their help and some very generous bequests, some **\$160,000** has been raised.

Friends of the MP Hospital meets every second Tuesday @ 10am. At the Day Care centre in the hospital. They welcome new members.



PRG 280/145/73

The hospital operated with a list of subscribers and a board. In 1922 the following people were re-elected to the board: Messrs. A. W. Lillecrapp, W. Ross Smith, C. O. Royal and Ross Hobbs. In June 1922 a deputation visited the Chief Secretary with a view to discuss the establishment of a purpose built premises for a public hospital. The suggestion was then presented to Cabinet and in November a local meeting was held to discuss to proposals, with the result that plans would be drawn up and a directive that costings were not to exceed £2,400. In the meantime the committee for the Proposed New Mount Pleasant District Hospital would negotiate with Council regarding the closing of the road on the eastern side of the proposed land... that land on which the hospital sits today.



Paula Bartsch  
Historian



Mount Pleasant District History



From Terese Stephens -  
Assistant Manager



## Mount Pleasant FARMERS MARKET

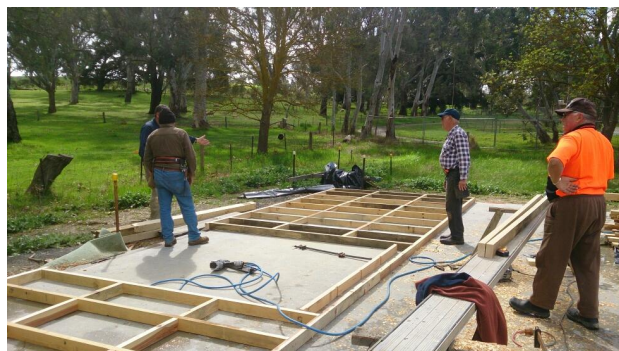


The inaugural Spring Garden Festival will welcome customers from 9am - 4pm. The festival will give visitors and locals alike the wonderful experience of a spring day out in the Hills while browsing through a large variety of plants, flowers and garden accessories.

For garden enthusiasts this should be a standout local spring gardening event to look forward to. A gold coin donation will be requested for entry fee, to the Farmers Market, which covers entry to the Garden Festival as well. The Farmers Market usually closes for the day at noon, but with the festival in full swing it will continue on with the Spring Garden Festival and finish at 4pm so there will be lots of time for browsing and garden-talk! Lunchtime food stalls will be available until festival ends. Ample parking is available, so come early and stay late. Specialist Garden Clubs will also be in attendance along with a variety of plant suppliers and nurseries. This will be a wonderful opportunity to find those hard-to-get plants, that something different and get specialist garden advice. With special guest speakers like Harry Harrison, Marie Collett and Botanist Bev Lane all your garden questions will be answered. A real treat will be to see William Sexton demonstrating his blacksmithing talents, and be able to purchase his garden art. Some of the stallholders already locked in are Arborgreen, Nellies Nursery, Terraforma Worlds, Weald View Gardens, Bren-ton Tucker, Yarrabee Gardens & Iris, Footeside Farm, Protea World, Notts Nursery and Falg Nurseries just to name a few.

[www.saspringgardenfestival.com.au](http://www.saspringgardenfestival.com.au)

## MP MEN'S SHED SHAPING UP



Amazing what a few hours and five determined shedders will achieve!



**SA SPRING  
GARDEN FESTIVAL  
-MT PLEASANT-**

Many quality plant stalls & all things garden related such as garden furniture & decor, ornaments & sculptures! Guest Speakers!

**WHEN: SAT. SEPT. 17, 2016**

**WHERE: MT PLEASANT SHOWGROUNDS**

**TIME: 9AM - 4PM**

gold coin donation entry fee - stallholder enquiries welcome - 0418 301 121

Proudly supported by MT PLEASANT FARMERS MARKET INC.



## Mount Pleasant Gem:

# Syd Starick

Sydney Dean Starick (Syd) started driving trucks at the age of just 17. His first job was driving for the E&WS department, which he held for three years during the construction of the South Para Reservoir. During this time Syd helped out with the 1956 floods at Mannum driving a Leyland and Mack tippers.

In November he married Barbara Morgan, the boss' daughter. He had begun truck driving for H. E. Morgan Carriers of Mount Pleasant in 1956 carting general goods and livestock. Mr Morgan would only have Ford trucks and semis. When Harry passed away in December 1959, Syd took over managing the business. This job mostly involved carrying livestock in and out of markets and from off shears sales locally and interstate. In the 1972 lamb season he was carting one or two loads of lambs from Port Lincoln saleyards to Melbourne every week. This continued until the business was taken over by Harry's only son.

Following that Syd worked for Bunker Freight Lines for 14 years travelling 'two up' (with a second driver) on Adelaide-Sydney-Perth-Adelaide. In 1982 Syd went to the northern Territory to drive a water truck when the road was being built from Curtin Springs to Yulara Village. The ring road at Uluru was also being constructed, and he spent some time on that job.

Syd also drove for McCarthy Bros and for Peter Kennedy between Adelaide and Port Lincoln. He also did a stint for CMV, bringing new trucks from Melbourne to Adelaide, as well as picking up seafood from port Lincoln and delivering it to Sydney for export. He also worked for L.W. Hoad taking sheep from Tungkillo to Donnybrook. In later years he drove



Collins Transport to Melbourne from Adelaide. He has only had one accident in all his years of truck driving when in 1997 he rolled a truck over on the Hay Plains. In 1984 and 1985 Syd received a hand injury and then a shoulder injury respectively. Syd's longest load was carrying two fan blades for a wind turbine. Syd well deserves his place in the Shell Rimula Wall of Fame.



Thanks to Fran Hentschke for the information and the photos.

And thanks also to Syd – for making sure I got in as much about his remarkable work life that I could!

Sue Barrett



# **Violet Day** **Shabby chic High Tea**

The ambience was set with the Mount Pleasant Historical Research group, CWA and Red Cross members assisting with the catering and presentation of the Hall ready for the successful Violet Day High Tea which was held on 28<sup>th</sup> August 2016. We raised \$1,600, with part proceeds to go to the McGrath Foundation and the remainder for the Historical Research group.

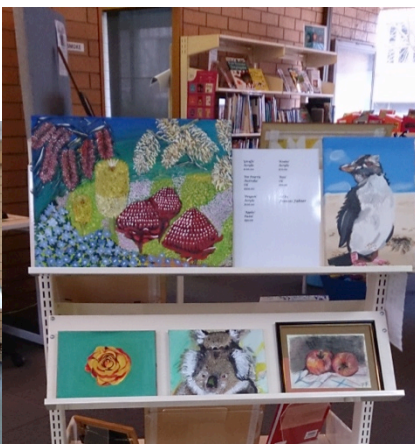
Violets were in profusion, from the veiling of the façade to decorations throughout the Hall, and there was a large selection of prizes in every shade, from mauve to deepest purple, which were raffled off during the afternoon. Mannequins were in abundance, displaying fashion from 1919 to today, and photographs reminded people of past traditions, including a very old one of a Barossa wedding, where the bride wore the customary black. The fashion parade of wedding and bridesmaid's dresses brought back memories for some, and there were several generations represented. Thanks must go to Les Fisher, who played 'Father of the bride' throughout. Tables were laden with food, and pots of fresh tea and coffee, ensuring guests enjoyed their afternoon tea with friends. It is planned to commemorate Violet Day once more in 2017 on the 2<sup>nd</sup> of July, so put this into your calendar now, and plan to come along for a 60/70s Retro theme.





# SALA

With the theme of 'From the Ground Up', we started the ball rolling on the 5th of August in Mount Pleasant. Deputy Mayor Margaret Harris opened the display of artwork by local artists from Springton to Mount Torrens. Featuring unique works – including paintings, pottery, sculptures and floral art, this was hopefully the first of many such events. The Mount Pleasant Library also had a great display of works from the Artist's Group that meets there on Fridays.





# Bits and bobs

**T.O.T.T.**  
**TOP OF THE TORRENS**  
**THEATRE GROUP INC.**

## *Fashion Parade*

In the Mt Pleasant Soldier's Memorial Hall, at 7.00pm, 23<sup>rd</sup> September.  
 Featuring Spring and Melbourne Cup fashions from Marion's Boutique, and men's fashions from Rod & Spur.



## Grand Cru Open Garden & Sculptures in the Garden Exhibition: 10 to 4, 17<sup>th</sup> & 18<sup>th</sup> Sept

We are proud to open the Grand Cru Estate gardens in conjunction with Open Gardens SA Inc for an amazing weekend. The whole Estate garden will be open and a sculpture exhibition will feature also.



Over this weekend we are supporting our local Springton CFS branch and the local community. Please come along and support your local community and importantly the CFS. Our local theatre group TOTT will be dressing up in Alice in Wonderland characters (Inc. the Mad Hatter) for a little bit of garden fun. Don't be afraid to put on your funny hat to share an extra giggle on the day!

The Mad Hatters Tea Party will be serving morning and afternoon teas with lovely acoustic music by talented Aden Sullivan. There will be plants & fresh flower stalls, local Barossa Ice-Cream, Hot n Frothy Coffee for coffee lovers, home made produce, Rozie's Grand Cru candles, Manning Sculptures stall (Inc the exhibition pieces in the garden) and special interstate artist Wendy Edwards Garden Sculptures, from Tasmania.

\$8 per adult, (pensioner concession available).

Sorry strictly no dogs. [www.opengardensa.org.au](http://www.opengardensa.org.au)



*Chris*

**GRAND**  
**DESIGN**



The amazing Chris Payne continues his journey to restore the old Mill site and make it into a valuable community asset and historical building. If you haven't been past in a while, it's worth having a look at his remarkable progress since last month. Fantastic job, Chris!



# Out & About

## In Springton

The Springton Hall was once again transformed into a Gallery as the Springton Progress Association hosted its second SALA Exhibition -VIRTUOSITY.

A gathering of around 70 people attended the opening day on Sunday 31<sup>st</sup> July. "Whilst the town may be small in population, there is a wealth of artistic talent to be discovered when you scratch the surface of our small community, so to speak" exhibition convenor Rosie Trenerry said during the opening address.

She went on to say "This year we are proud to present the creative works of 9 highly talented local artists and artisans.

- The diverse works of Joe Dennis including stylish hand thrown ceramics and fine pastel and watercolour paintings
- Sinuous, sensuous, tactile timber sculptures from the hand and chisel of Phil Elliot
- Bold & vibrant acrylic canvases by Amy Herman
- Beautiful, evocative watercolour paintings from Viv Liddicoat
- The truly amazing and highly desirable steel creations of Trent Manning
- Luminous acrylic and mixed media paintings, plus pastels, lino cut prints and charcoal renderings by Cherie O'Dea
- Sarah Prince who manages to endow a piece of plain white paper with so much incredible character and personality using a simple graphite pencil
- The fantastic timeless leather creations from the hand of Rose-Anne Russell
- And the oh-so-fine paper quilled jewellery and pastel and watercolour artworks, also with paper quilled elements by Lyn Stephens."

The exhibition name VIRTUOSITY was chosen as it was thought to be most suitable to describe the artists and this collection of their works. *Skilfulness, expertise, proficiency, dexterity & excellence, talent, artistry, technique, creativity, polish, panache, finesse, quality & professionalism* are just some of the words the dictionary offers in definition.

A support event entitled THE ART OF WINE was held in the Springton Hall Supper Room on Sunday 14<sup>th</sup> August.

ART OF WINE gave people the opportunity to enjoy an afternoon of wine tasting & chatting with 6 local winemakers about their art-form.



Colin Forbes with Amy Herman and Phil & Liz Elliot – next to one of Phil's fantastic wood sculptures. Artists below.



## Opening of the Sanderston Walking Trail



The Sanderston Walking Trail links Saunders Gorge with the Lavender Federation Trail at Springton. South Australian Recreation Trails Inc. and the Mid-Murray Council held a grand opening ceremony at the Saunders Gorge Sanctuary.

Sunday 21<sup>st</sup> August. Mid Murray Council Mayor – David Burgess conducted the opening ceremony followed by lunch in the Saunders Gorge Restaurant. This was then

followed by Guided walks on the Sanderston Trail and Saunders Gorge. For more information see the *Footsteps Newsletter* on the Lavender Federation Trail website: [www.lavenderfederationtrail.org.au](http://www.lavenderfederationtrail.org.au).

Brochures (which include maps) are also available from The Murray Bridge and Mid Murray Council information centres.






## September events and meetings



Market **closed** on the 10th of September for Rally SA. On again on the 17th September and open all day for the SA spring Garden Festival.



Mo	Tu	We	Th	Fr	Sa	Su
			1 1-4: Mount Pleasant History Room	2 9.30-11.30: Playgroup @ Mt Pleasant Kindy	3 8-12: MP Farmers Mkt	4
5 Talunga Pk Advisory group	6 CWA meetings <b>7.00: CFS Training</b>	7 9.30: Men's Shed MPNRC 7.30: Table Tennis @ BHS Gym	8 10-12: Writers Group - MP Library 1-4: MP History Room	9 9.30-11.30: Playgroup @ Mt Pleasant Kindy 10-2: MP Art	10 <b>MP Farmers Market CLOSED today for Rally SA</b>	11
12	13 10.00: Friends of the Hospital @ Day Care 6.30: MP Inc. 7.00: RSL social <b>7.00: CFS Training</b>	14 7.30: Table Tennis @ BHS Gym	15 1-4 : Mount Pleasant History Room 	16 9.30-11.30: Playgroup @ Mt Pleasant Kindy	17 8-12: MP Farmers Mkt <b>SA Spring Garden Festival (all day)</b>	18
19 7.30: SM Hall VAC	20 <b>7.00: CFS Training</b>	21 9.30: Men's Shed MPNRC 7.30: Table Tennis @ BHS Gym	22 10-12: Writers Grp -Library 1-4: MP History Room	23 9.30-11.30: Playgroup @ Mt P Kindy 10-2: MP Art	24 8-12: MP Farmers Mkt	25 5pm: RSL AGM <b>Community Dinner Newsletter deadline</b>
26	27 <b>7.00: CFS Training</b>	28 7.30: Table Tennis @ BHS Gym <b>Newsletter</b>	29	30		



## Thank You

Thank you to Stephan Knoll MP, who kindly printed this month's newsletter, and to those businesses that have agreed to distribute the newsletters.

A production of MP Inc.

(The Mount Pleasant Progress Ass'n Inc)



If you wish to be notified when the newsletter is available online, please contact us via-  
t: 0403012339 or  
e: mountpleasantshines@gmail.com  
e: info@mountpleasant.sa.au